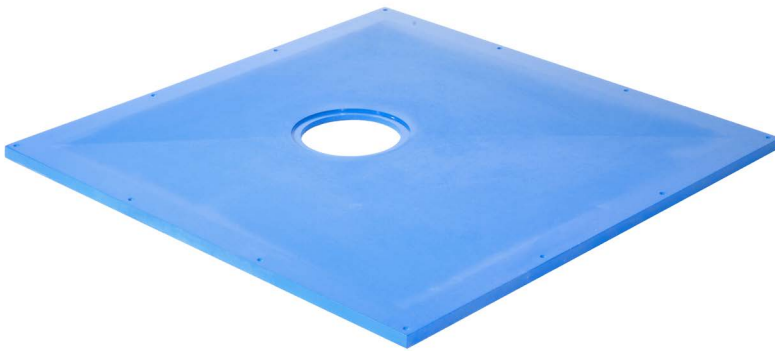


Installation Instructions



Micro Cement Kit



Please ensure all tradesman working on or around the installation have consulted these instructions.

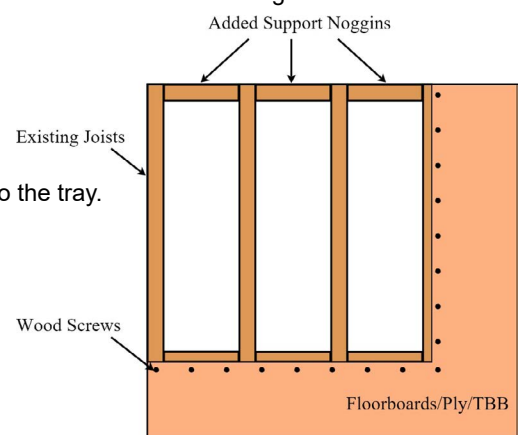
Installation Overview

These instructions assume the wetroom has been appropriately designed and all plumbing and electrical work is to building regulations. These instructions will cover the most typical level floor installations on suspended timber or solid concrete floors. For raised floor areas the instructions can be applied where appropriate.

The Maxxus is a load bearing deck which can sustain a load of 470kgs over 400mm joist centres without deflection and as such require no under boarding

Installation on Timber Floors

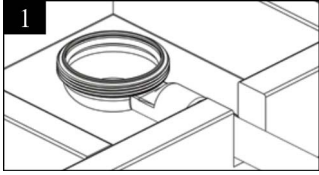
1. Remove the floorboards to expose the joists in the area where the deck will be fitted.
2. Inspect the existing joists and if in doubt remedial action should be taken to ensure the floor is strong and free of movement.
3. If joist centres are 400mm or less the Maxxus can be laid straight over the existing joists without under boarding.
4. If the joist centres are over 400mm install additional noggins for support.
5. All edges of the deck must be supported.
6. Lay the tray in position and consider the waste location and connection.
7. Connect the waste using the method shown overleaf.
8. To fix the Maxxus pilot drill and screw down securely with appropriate wood screws.
9. Check to make sure there is no movement and that the tray is level.
10. Use additional fixings if movement is detected, screw heads must be countersunk into the tray.
11. Fill any gaps, joins or screw heads and sand level.



Installation on Existing Concrete Floors

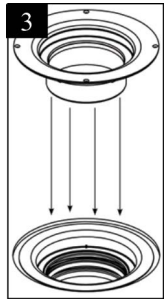
1. If inseting the tray, the area beneath the deck must be cut and chiseled out to accommodate the deck, drain and waste pipe.
2. Read overleaf the waste installation method.
3. Connect the bottom section of the drain to pipework.
4. Bed the deck down on tile adhesive or sand and cement.
5. Finish installing the drain.
6. Ensure the deck is level then allow to fully dry.
7. Pilot drill the deck and securely screw down.
8. Check to make sure there is no movement and that the tray is level.
9. Use additional fixings if movement is detected, screw heads must be countersunk into the tray.
10. Fill any gaps, joins or screw heads and sand level.

Drain Installation Instructions

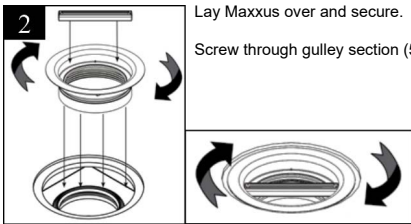


1 Measure Maxxus drain location and then connect section (7) of the gully to the waste pipe using solvent-weld adhesive centrally underneath the hole of the deck. The gully seal section (6) is pre installed in the gully bottom section.

Support the gully vertically with a cross-batten or board.

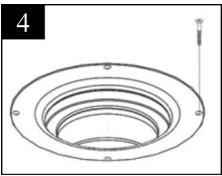


3 Push gully section (4) firmly inside the middle section (5) until they click together.



2 Lay Maxxus over and secure.

Screw through gully section (5) and tighten using the installation tool



4 Pilot section (4) and screw down using the supplied screws. Do not use power tools.

Insert the NOOD water trap.

Components Required

Disregard any other parts that may have been included in the drain box



Micro Cement Grid Installation Instructions



Do not remove the protective film until the micro cement has been laid

1. Install the drain into the tray/floor.
2. Remove the clamping ring from the top section of the drain and discard.
3. Apply a bead of sealant to the inner wall of the drain, place the microcement grid into the drain and into the sealant.
4. Ensure a good seal between the drain and grid, this prevents water inside the drain soaking up into the microcement.
5. Allow sealant to dry.
6. The grid has two sides, an infill side and a standard finish side.
7. If using the infill side lay the micro cement into this at the same time as the rest of the floor.
8. If using the standard finish side ignore the infill.
9. Lay micro cement.
10. Remove protective film from grid top.
11. Remove any excess residue using a non abrasive cloth and hot soapy water.
12. Flip grid over to standard finish side if required.